

Butterflies and Moths of North America



www.butterfliesandmoths.org

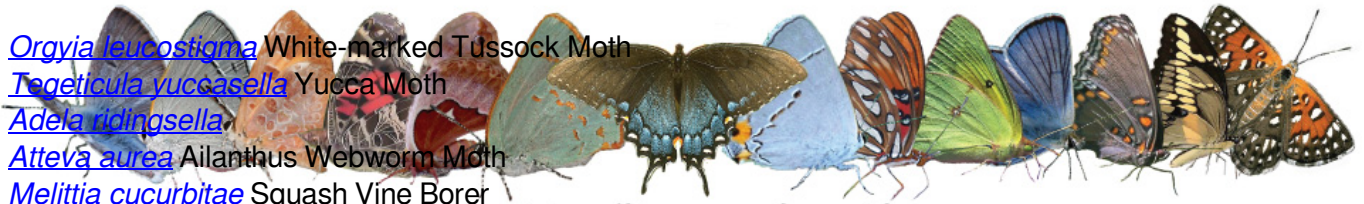
[*Epargyreus clarus*](#) Silver-spotted Skipper
[*Thorybes bathyllus*](#) Southern Cloudywing
[*Erynnis baptisiae*](#) Wild Indigo Duskywing
[*Pholisora catullus*](#) Common Sootywing
[*Ancyloxypha numitor*](#) Least Skipper
[*Hylephila phyleus*](#) Fiery Skipper
[*Hesperia ottoe*](#) Ottoe Skipper
[*Atalopedes campestris*](#) Sachem
[*Polites peckius*](#) Peck's Skipper
[*Polites themistocles*](#) Tawny-edged Skipper
[*Polites origenes*](#) Crossline Skipper
[*Wallengrenia egeremet*](#) Northern Broken-Dash
[*Anatrytone logan*](#) Delaware Skipper
[*Poanes hobomok*](#) Hobomok Skipper
[*Poanes massasoit*](#) Mulberry Wing
[*Euphyes conspicua*](#) Black Dash
[*Euphyes dion*](#) Dion Skipper
[*Euphyes dukesi*](#) Dukes' Skipper
[*Euphyes bimacula*](#) Two-spotted Skipper
[*Euphyes vestris*](#) Dun Skipper
[*Papilio polyxenes*](#) Black Swallowtail
[*Papilio glaucus*](#) Eastern Tiger Swallowtail
[*Papilio cressphontes*](#) Giant Swallowtail
[*Pieris rapae*](#) Cabbage White
[*Colias philodice*](#) Clouded Sulphur
[*Colias eurytheme*](#) Orange Sulphur
[*Phoebis sennae*](#) Cloudless Sulphur
[*Abaeis nicippe*](#) Sleepy Orange
[*Lycaena phlaeas*](#) American Copper
[*Lycaena dione*](#) Gray Copper
[*Lycaena hylus*](#) Bronze Copper
[*Satyrium titus*](#) Coral Hairstreak
[*Satyrium acadica*](#) Acadian Hairstreak
[*Satyrium calanus*](#) Banded Hairstreak
[*Strymon melinus*](#) Gray Hairstreak
[*Cupido comyntas*](#) Eastern Tailed-Blue
[*Celastrina ladon*](#) Spring Azure
[*Celastrina neglecta*](#) Summer Azure
[*Libytheana carinenta*](#) American Snout
[*Danaus plexippus*](#) Monarch
[*Euptoieta claudia*](#) Variegated Fritillary
[*Speyeria cybele*](#) Great Spangled Fritillary
[*Speyeria aphrodite*](#) Aphrodite Fritillary
[*Speyeria idalia*](#) Regal Fritillary
[*Boloria bellona*](#) Meadow Fritillary
[*Limenitis arthemis*](#) Red-spotted Purple or White Admiral
[*Limenitis arthemis astyanax*](#) 'Astyanax' Red-spotted Purple

Butterflies and Moths of North America



- [*Limenitis archippus*](#) Viceroy
[*Asterocampa celtis*](#) Hackberry Emperor
[*Asterocampa clyton*](#) Tawny Emperor
[*Chlosyne gorgone*](#) Gorgone Checkerspot
[*Phyciodes tharos*](#) Pearl Crescent
[*Euphydryas phaeton*](#) Baltimore Checkerspot
[*Junonia coenia*](#) Common Buckeye
[*Polygonia interrogationis*](#) Question Mark
[*Polygonia comma*](#) Eastern Comma
[*Polygonia progne*](#) Gray Comma
[*Nymphalis antiopa*](#) Mourning Cloak
[*Vanessa atalanta*](#) Red Admiral
[*Vanessa cardui*](#) Painted Lady
[*Vanessa virginiensis*](#) American Lady
[*Satyrodes eurydice*](#) Eyed Brown
[*Cercyonis pegala*](#) Common Wood-Nymph
[*Callosamia promethea*](#) Promethea silkmoth
[*Hyalophora cecropia*](#) Cecropia silkmoth
[*Antheraea polyphemus*](#) Polyphemus moth
[*Sphingicampa bicolor*](#) Bicolored honey locust moth
[*Eacles imperialis*](#) Imperial moth
[*Manduca sexta*](#) Carolina sphinx
[*Hemaris thysbe*](#) Hummingbird Clearwing
[*Hemaris diffinis*](#) Snowberry Clearwing
[*Hyles gallii*](#) Bedstraw hawkmoth
[*Eumorpha pandorus*](#) Pandorus Sphinx
[*Hyles lineata*](#) White-lined Sphinx
[*Gluphisia septentrionis*](#) Common Gluphisia
[*Acronicta americana*](#) American Dagger Moth
[*Acronicta interrupta*](#) Interrupted Dagger Moth
[*Spodoptera ornithogalli*](#) Yellow-striped Armyworm Moth
[*Eupsilia morrisoni*](#) Morrison's Sallow
[*Anagrapha falcifera*](#) Celery Looper Moth
[*Rachiplusia ou*](#) Gray Looper Moth
[*Megalographa biloba*](#) Bilobed Looper Moth
[*Mythimna unipuncta*](#) Armyworm Moth
[*Nephelodes minians*](#) Bronzed Cutworm Moth
[*Noctua pronuba*](#) European Yellow Underwing
[*Helicoverpa zea*](#) Corn Earworm Moth
[*Alypia octomaculata*](#) Eight-spotted Forester
[*Haploa lecontei*](#) Leconte's Haploa
[*Hypercompe scribonia*](#) Great Leopard Moth
[*Pyrrharctia isabella*](#) Isabella Tiger Moth or Banded Woollybear
[*Spilosoma virginica*](#) Virginian Tiger Moth or Yellow Woollybear Moth
[*Virbia aurantiaca*](#) Orange Holomelina
[*Cisseps fulvicollis*](#) Yellow-collared Scape Moth
[*Euchaetes egle*](#) Milkweed Tussock Moth or Milkweed Tiger Moth
[*Haploa confusa*](#) Confused Haploa
[*Tetanolita floridana*](#) Florida Tetanolita Moth
[*Chytolita morbidalis*](#) Morbid Owlet Moth
[*Hypena scabra*](#) Green Cloverworm Moth
[*Caenurgina erechtea*](#) Forage Looper Moth
[*Ascalapha odorata*](#) Black Witch
[*Catocala amatrix*](#) Sweetheart Underwing
[*Zale lunata*](#) Lunate Zale

Butterflies and Moths of North America



[*Orgyia leucostigma*](#) White-marked Tussock Moth

[*Tegeticula yuccasella*](#) Yucca Moth

[*Adela ridingsella*](#)

[*Atteva aurea*](#) Ailanthus Webworm Moth

[*Melittia cucurbitae*](#) Squash Vine Borer

[*Sparganothis sulfureana*](#) Sparganothis Fruitworm Moth

[*Crambus albellus*](#) Small White Grass-veneer

[*Urola nivalis*](#)

[*Crambus laqueatellus*](#) Eastern Grass-veneer

[*Microcrambus elegans*](#) Elegant Grass-veneer

[*Nomophila nearctica*](#) Lucerne Moth

[*Udea rubigalis*](#) Celery Leaf-tier Moth

[*Saucrobotys futilalis*](#) Dogbane Saucrobotys Moth

[*Aglossa pinguinalis*](#) Large Tabby

[*Glena cribrataria*](#) Dotted Gray

[*Eugonobapta nivosaria*](#) Snowy Geometer

[*Macaria bisignata*](#) Red-headed inchworm

[*Ennomos subsignaria*](#) Elm Spanworm Moth

[*Horisme intestinata*](#) Brown Bark Carpet

[*Trichodezia albovittata*](#) White-striped Black

[*Haematopis grataria*](#) Chickweed Geometer

[*Scopula limboundata*](#) Large Lace-border

www.butterfliesandmoths.org